



DORSET LOCAL PLAN CONSULTATION

THINKING ABOUT OUR FUTURE

The Local Plan will influence housing, jobs, transport, the environment, the production of renewable energy, and how our countryside is protected.



What kind of place do you want our parish to be in 10–20 years' time?

What do you think are the biggest challenges and opportunities for Dorset's future?

How should we balance the need for new development with protecting our rural character and environment?



HOUSING

What type of new housing would best meet local needs (e.g. affordable, family homes, smaller homes)?

How much development do you think our parish can realistically accommodate?

Where (if anywhere) might new homes be most suitable?



TRANSPORT

How can we improve access to public transport in rural areas like ours?

What role should cycling, walking, and shared transport play in the future?

How can we reduce reliance on private cars?



ENVIRONMENT & COUNTRYSIDE

How can new development protect and enhance our landscape and biodiversity?

What concerns do you have about the impact of development on our countryside?

Should more green spaces be included in future planning?



RENEWABLES & ENERGY

Are small-scale wind and solar schemes appropriate for our parish?

How can we balance renewable energy needs with protecting local character?

Would you support more solar panels on new homes and community buildings?



EMPLOYMENT & ECONOMY

What types of local jobs and businesses should be supported here?

Do we need dedicated employment land, or can businesses be mixed into communities?

How important is digital infrastructure (broadband, mobile coverage) for future growth?



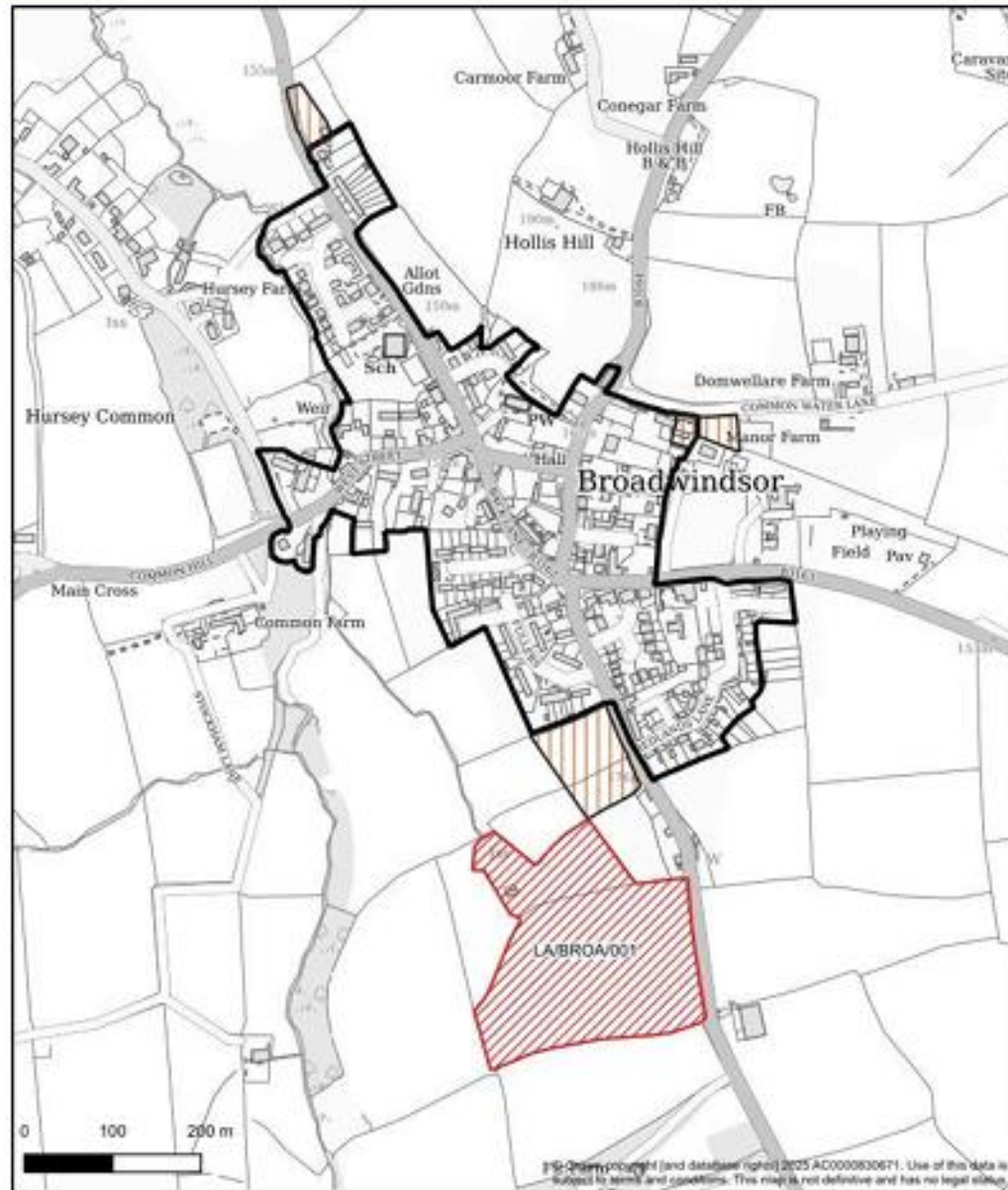
INFRASTRUCTURE

What extra services (schools, health, community spaces) would be needed with more homes?

How can roads, drainage, and utilities cope with future development?

What improvements would make the biggest difference to daily life?





HOUSING

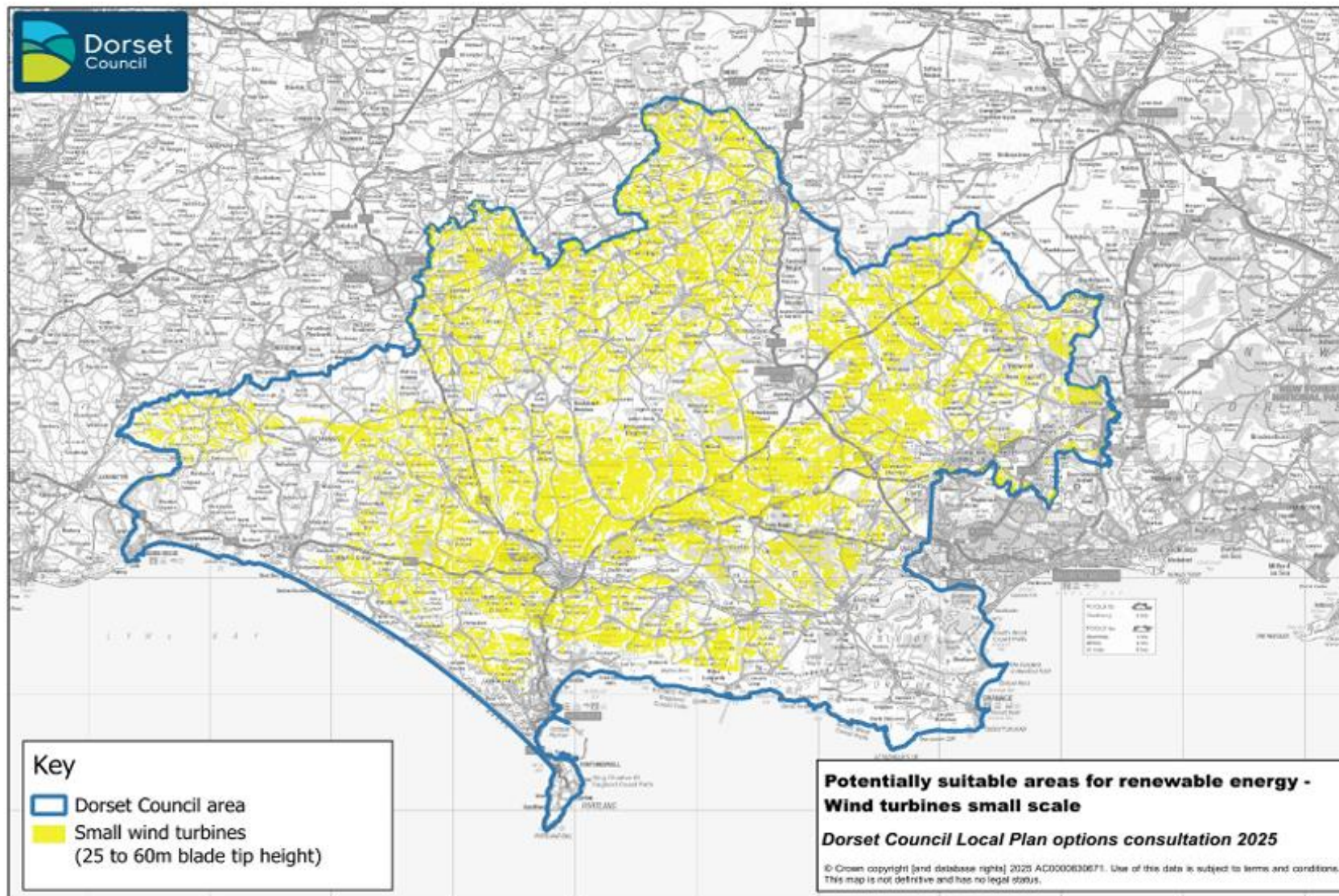
Land adj Folly Cottage
Site area (ha) 4.93

Estimated number of
homes/capacity
Around 89 homes

Greenfield

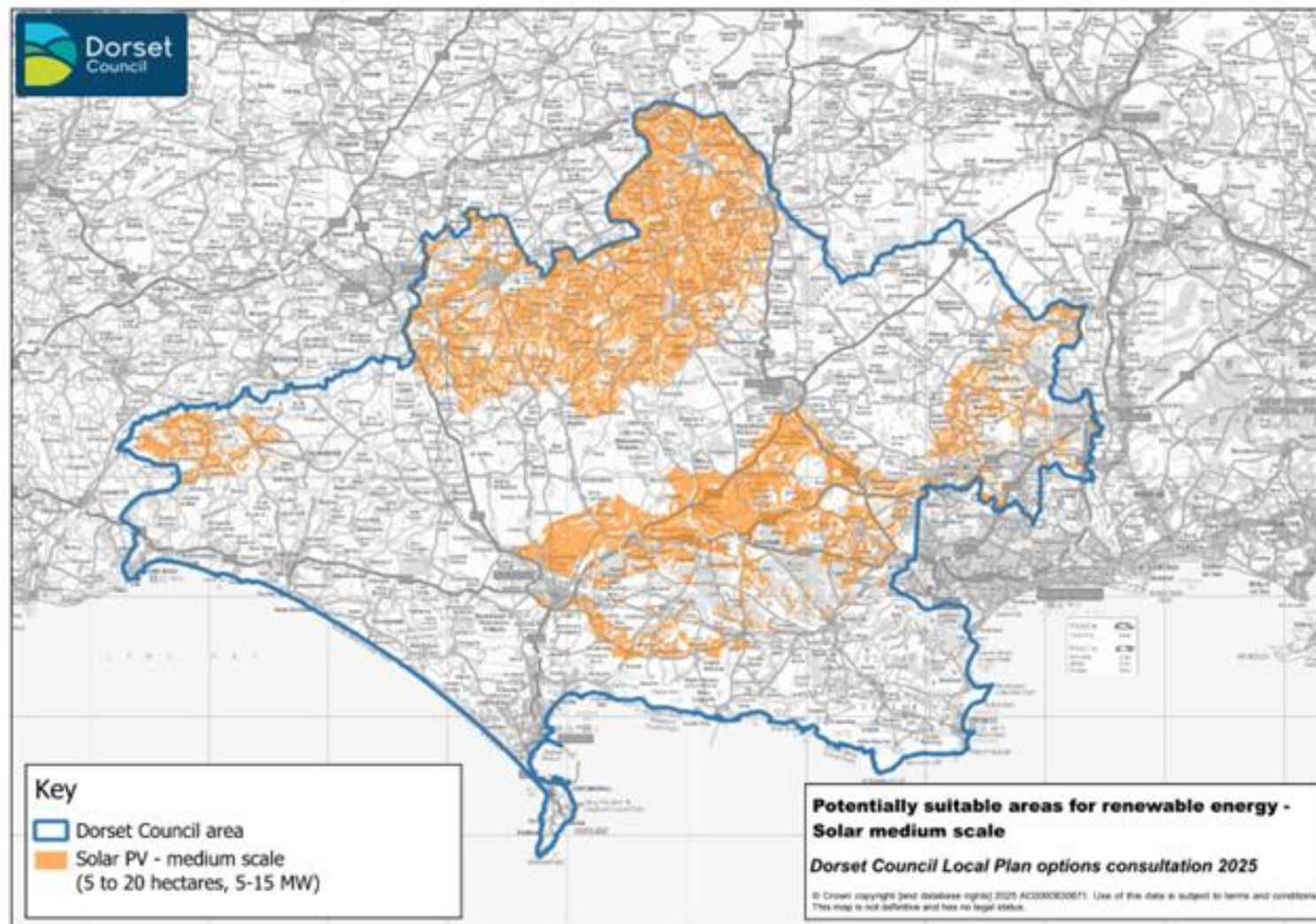


Small scale wind turbines

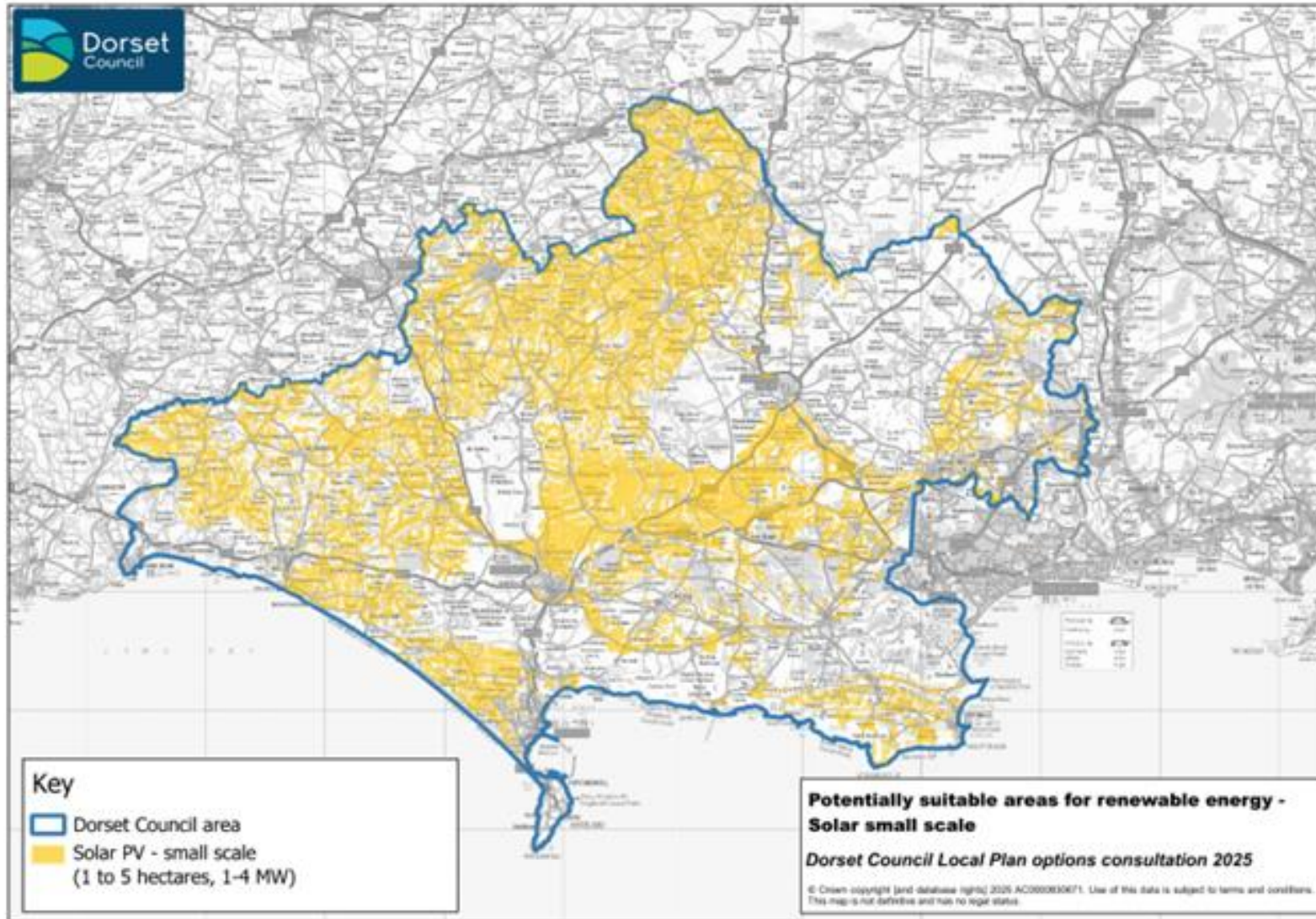


Solar energy




Medium scale solar



Small scale solar



GET INVOLVED

- Dorset Council's consultation runs until 13 October 2025. You can have your say:
-  Online: www.dorsetcouncil.gov.uk/dorset-is-changing
-  Download full documents:
www.dorsetcouncil.gov.uk/dorset-council-local-plan-options-consultation-2025
-  View at your local library or at County Hall, Dorchester



WHAT TO DO TODAY

Write down your thoughts,
comments, questions, concerns
on the cards provided.
We really want to hear from you.





THANK YOU FOR
ATTENDING