



**BROADWINDSOR GROUP
PARISH**

EMERGENCY PLAN

Adopted 8 January 2018

(1)

Introduction to Broadwindsor Group Parish Community

Emergency Plan

Broadwindsor Parish Community comprises the villages of, hamlets and areas between Broadwindsor, Drimpton, Blackdown, Seaborough, Hursey, Burstock and Little Windsor.

Villages and hamlets can be remote or far from emergency services should an extreme emergency occur. By extreme emergency we mean something that could cause danger to life immediately or if it should persist. Examples of these include flooding, being cut off by snow, electricity or water failures or serious accident involving aircraft or motor vehicles. Often access may be cut off and new routes may need to be found.

Vulnerable people such as the sick, elderly, young families or those with disabilities will need extra support at this time.

For these reasons rapid and appropriate action needs to be taken prior to the arrival of the emergency services. This is one aim of the emergency plan.

The other aim is to build what is termed, 'Community Resilience'. In other words a level of preparedness and self-reliance integrated into the community whereby preliminary safety measures can confidently be taken.

Community resilience is part of what we all do as rural communities on an ad hoc basis such as helping a neighbour, farmers removing fallen trees, flood wardens managing potential flood situations but the emergency plan pulls together all the key people and records them all in one place. It has an action plan for emergencies which may involve all or some of these people.

We have performed risk assessments for the area and considered what possible responses we could take and who in the community could provide support. We have identified members of the community who are willing to offer skills, machinery, four by four vehicles, chain saws and who can support the vulnerable and have recorded them on our plan. We have the names of key holders for the village halls just in case they are needed as places of refuge in an emergency. Some local people have also offered their homes as a places of refuge.

A telephone tree is available showing which people take responsibility for contacting a small group of other key people who in turn contact others so that all who need to be informed are contacted quickly and efficiently in an emergency.

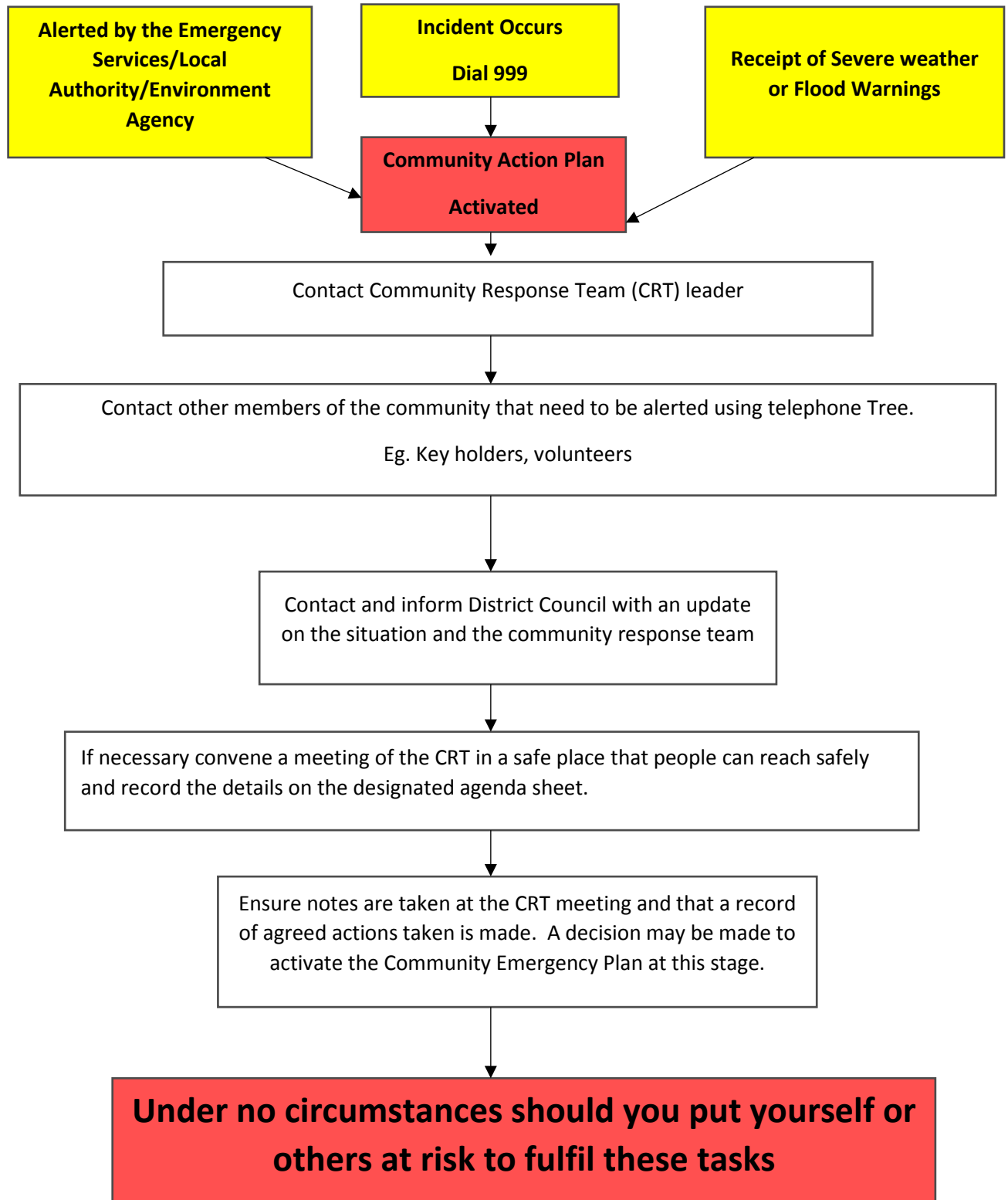
In addition to services provided by WDDC we rely on neighbours and/or family to support the vulnerable people near to them in terms of keeping them informed, assisting them to places of refuge and generally ensuring that their needs are met in the event of a severe emergency and prior to the arrival of first responders.

This by its very nature is a dynamic document which will need updating as personnel and needs of communities change.

Councillor Lesley Tibballs

(2)

Community Response Team Triggers and Activation



Broadwindsor Group Parish: Risk Assessments

(3)

Hazard/Risk	Impact upon Community	What can the Emergency Community Group do to Prepare?
<p>CATASTROPHIC: Aviation accident: Westland aviation and Yeovilton</p>	<ul style="list-style-type: none"> • Blocked roads • Damage to buildings • Fire and debris • Personal injury 	<ul style="list-style-type: none"> • Have list of alternative routes to hand to maintain flow of traffic • Have volunteers trained to redirect traffic. Have ROAD CLOSED signs • Have list of designated key holders to village halls and other places of refuge for evacuees. • Have list of first aiders, first responders able to attend at short notice.
<p>SIGNIFICANT: Fire/explosion fuel Eg Kittwhistle Garage or oil tanker. Oil, petrol, diesel, butane, propane and O2</p>	<ul style="list-style-type: none"> • Fire and debris • Personal injury • Damage to buildings • Blocked roads • Environmental damage 	<ul style="list-style-type: none"> • Need to clear an area of at least 100m • Measures as above.
<p>Loss of drinking water</p>	<ul style="list-style-type: none"> • Depends upon time taken to recover supplies 	<ul style="list-style-type: none"> • Wessex water will supply bottled water. • List of those who are vulnerable and activate telephone tree to deliver bottled water to them and keep them informed and reassured.
<p>Loss of electricity</p>	<ul style="list-style-type: none"> • Most vulnerable are those with only electric power • Residents can't get heat light or hot water. • Unable to cook food • Defrosting fridges • Problems operating village shops, garages, mobile post office. 	<ul style="list-style-type: none"> • Identify residents most at risk • Activate telephone tree to check on residents • Ask volunteers to 'door knock' • Open up place of safety such as village hall for hot refreshments and information point. • Co-ordinate hot refreshments delivery to housebound residents • Promote registration with suppliers as 'vulnerable customers' • Purchase generators • Have list of those who will loan generators

Hazard/Risk	Impact upon community	What the community Emergency Group can do to Prepare
River flooding	<ul style="list-style-type: none"> • Flooding of local roads • Cars travelling too quickly cause waves into properties • School bus can't travel through village • Homes flooded • Other buildings flooded 	<ul style="list-style-type: none"> • Sign up to receive MET Office weather warnings, email alerts from www.metoffice.gov.uk/about-u/sguide-to-emails for rain for your area. • Sign up to EA Flood alerts: www.environment-agency.gov.uk • Encourage residents to improve home flood defences assisted by the DCC Flood Management Team. • Have flood warning signs available in the villages. • Have sandbags ready/ready to fill. • Have list of vulnerable people and those who can check on them. • Have list of keyholders of village halls and places where people can be evacuated, provided with hot drinks and information point. • Have trained Flood Wardens. Contact Jennifer Godby from 'GROUNDWORK' for training and provision of equipment. • Communication: social media pages to show what is happening, radios (RAYNET) mobile 'phones.
Storms and Gales	<ul style="list-style-type: none"> • Fallen trees blocking roads damaging property and endangering life. • Materials lifted from ground or properties endangering property and life. • Cables down 	<ul style="list-style-type: none"> • Have list of volunteers who will come out with chain saws, tractors etc • Have alternative routes ready to redirect traffic. • Evacuate buildings endangered or damaged by trees etc and those nearby to designated place of refuge. • Communication: social media pages to show what is happening, radios (RAYNET) mobile 'phones. • Have list of vulnerable people and those who can check on them.
Release of hazardous materials	<ul style="list-style-type: none"> • Danger to life • Pollution of watercourses and land • Fire/explosion risk 	<ul style="list-style-type: none"> • Have list of keyholders of village halls and places where people can be evacuated, provided with hot drinks and information point. • Have alternative routes ready to redirect traffic.

Hazard/Risk	Impact upon Community	What the Community Emergency Group can do to prepare
Industrial action by emergency services	<ul style="list-style-type: none"> • Vulnerable people can't get to hospital, doctors' appointments • People can't get prescriptions 	<ul style="list-style-type: none"> • Use the established lift service which operates from Beaminster. • Have a list of willing volunteers to transport people in an emergency.

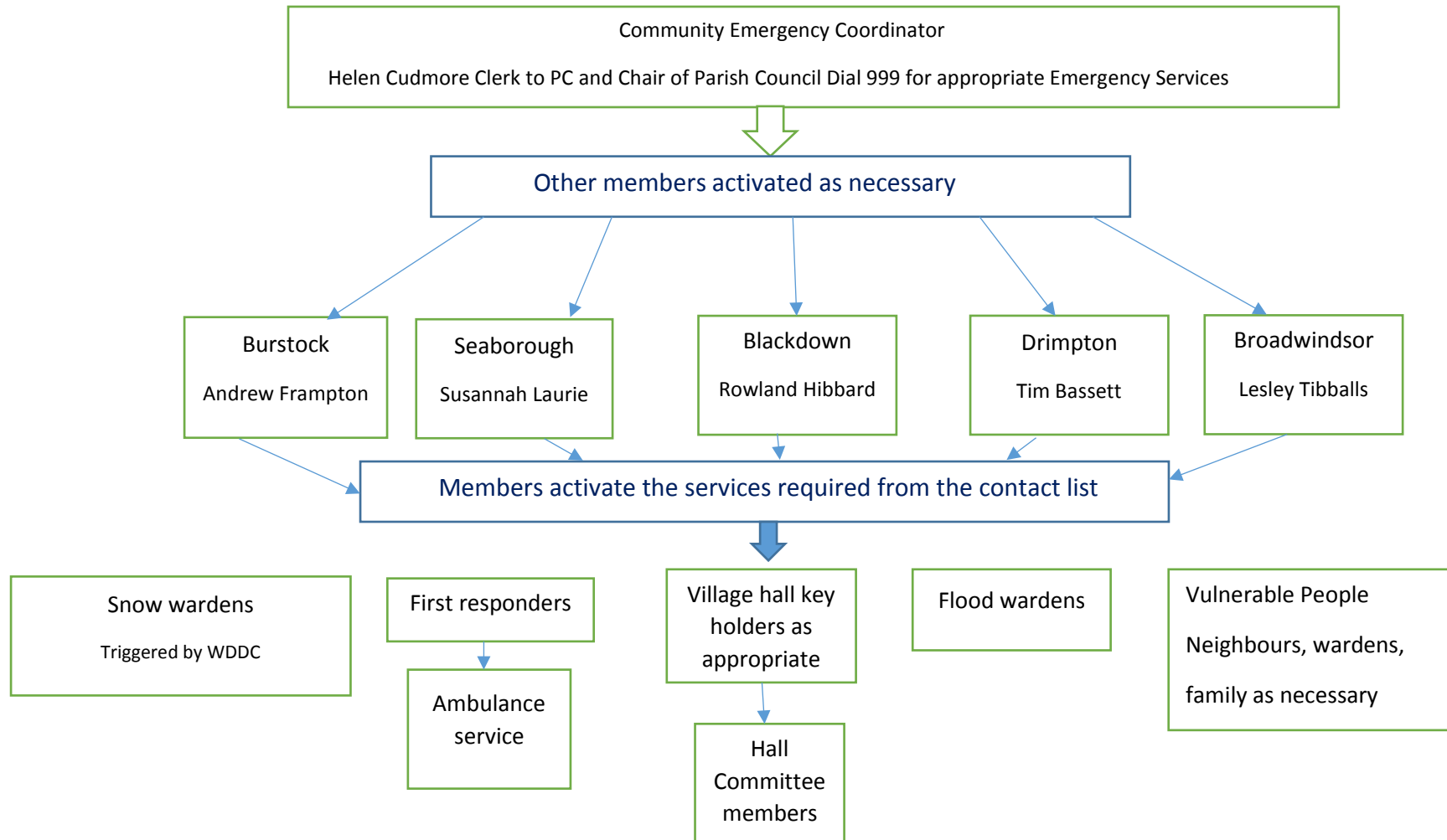
KEY Contact Information

(4)

KEY CONTACT INFORMATION	
MET Office Mobile Website For weather Forecast and warning information.	Website: www.metoffice.gov.uk/services/mobile-Weather
MET Office APP For weather forecast and warning information.	Website: www.metoffice.gov.uk/services/mobile-digital-services/weather-app
MET Office Twitter (24hr) For weather forecast and warning information.	Twitter: @metoffice
National enquiry number for power outages	24 hours Tel: 105
Scottish and Southern Energy Power Distribution	24 hours Tel: 0800 072 7282
Western Power Distribution	24 hours Tel: 0845 651651
British Gas	24 hours Tel: 0800 111999 Email:
Southern Gas Networks NECC Emergency Contact (General Public)	24 hours Tel: 0800 111999
NHS Choices	Office hours Tel:
Broadwindsor Group Parish Chair Mr Roland Hibbard	Office hours Tel: 01460 30269 Out of hours Tel:
Broadwindsor Group Parish Clerk Mrs. Helen Cudmore	Tel: 0138 488440
Broadwindsor Comrades Hall key holders: Lesley Tibballs Andrew Hookings	Tel: 01308 867241 Tel: 01308 867638
Drimpton Village Hall keyholders: Tim Bassett Roger Smith Steve Chubb	Tel:01308 867493 Tel: 01308 867442 Tel: 01308 868385
Blackdown Village Hall keyholders Roland Hibbard	Tel: 01460 30269
RSPCA	www.rspca.org.uk/in-action/international/emergencyresponse Tel: 0300 1234 555
Radio Amateurs'Emergency Network RAYNET The UK's national voluntary communications service provided for the community by licensed radio amateurs.	www.raynet-uk.net <u>030 30 40 1080*</u> *NB: Only to be contacted by Official Emergency Services and then only if local call out procedures have failed or are non-existent in your area.

(5) Telephone Tree

This tree works as a pyramid with the coordinator at the top making the first call to two or more people. In turn they call an assigned set of people and so on until the tree is complete



(6) Local Skills and Resources

NB: vehicle owners must be insured to use their vehicles in particular emergencies. GOV is working with the insurance Industry to explore insurance and liability issues for a range of emergency scenarios. Find help with insurance issues at www.abi.org.uk.

Access Insurance. (charity insurance) 020 8038 6354

Skills/Resources	Who	Contact details	Location	When available
Two JCBs Will clear snow from roads at Drimpton Cross and Broadwindsor	Will Frost	01308 868228	Childhay Manor Farm.	When needed. Especially snow, fallen trees
Range of JCB excavators and loadalls. Transport 1-20 ton capacity	Peter Hardwill	01460 30661 01460 30145	Blackdown	
Chain saw Tractor Landrover Discovery	Rob Hedditch	01308 867601 M: 07727168188	Drimpton	
	Andrew Frampton	01308 868960	Burstock	
Snow plough	Lloyd Curtis	01308 868711	Hursey	
			Seaborough	

(8) Key locations identified with the Emergency Services as places of safety

NB: The local authority holds a list of identified establishments for Rest Centres that have agreed to assist in an emergency situation.

Building	Location	Potential Use in an emergency	Contact details of key holders
Comrades Hall	High Street, Broadwindsor DT8 3QP	Kitchen facilities. Lavatories. Two large halls. Tables and chairs. Broadband	1.Andrew Hookings 01308 867638 2.Terry Clarke 01308 867939
Drimpton Village hall	Chard Road, Drimpton DT8 3RF	Kitchen facilities. Lavatories. Large hall. Tables chairs. Broadband. Defibrillator	1.Tim Bassett 01308 867493 2.Roger Smith 01308 867442
Blackdown Village Hall	On the B3165 Crewkerne to Lyme Regis Road. DT6 5QQ	Kitchen facilities. Lavatories. Large hall. Tables and chairs. Broadband.	1.Rowland Hibbard 01460 30269 2.
Broadwindsor School	Drimpton Road, Broadwindsor DT8 3QL	Kitchen facilities. Lavatories. School hall. Tables and chairs. Broadband.	1. 2.

Parish Council unanimously agreed to focus its support in 2016/2017 for vulnerable older and younger people within the Grouped Parish area.

I have made the assumption that residents of local nursing homes need not to be considered as 'vulnerable' for the purposes of this initiative.

Broadwindsor has a thriving 'Over 60's' Club with over 70 members. There is a membership fee of £5 a year and members come from all of the surrounding area.

Broadwindsor Women's' Institute has 29 members paying an annual subscription fee of £38, and has members from throughout the Council area. (Brenda Smith (Sec.))

Blackdown Women's' Institute has 24 members. (Ch Jane Rudkin 01460 30235)

Broadwindsor Short Mat Bowling Club.

Blackdown Dance Club monthly village hall (Mike & Anne Passmore 01297 678439)

Blackdown Whist Drive 1st and 2nd weeks about £2 each evening

Fullers Sewing Group open to non residents cost 50p per meeting. (Annette 868639)

Fullers Luncheon Club meet monthly cost £6.50 for a two course meal, open to all.

Broadwindsor Stitches, an open to all group who meet in Comrades Hall fortnightly on a Friday morning, costing £10 per year, or £3 a session.

Broadwindsor Church Coffee Shop, meet every Saturday, 10.30 – 11.30. Open to all for a contribution for a warm drink and company. The owner died two months ago, but the next of kin have as yet, not plans to stop the premises from being enjoyed.

Broadwindsor Cricket Club charges no fee to sit and watch a match, and welcomes spectators. There is a club house where refreshment may be purchased

Any of the churches will provide spiritual support as required.

Legal advice ..Lindsey Blair, Age and Disability Advice Centre Ltd, 94 East Street, Bridport, DT6 3LL tel 01308 425341...specialise in wills and disability claims, and any legal matters that affect older people.

Tax Help for Older People, Unit 17B, Pineapple Business Park, Pineapple Lane, Bridport DT6 5DB 01308 488066 www.taxvol.org.uk : is a UK registered Charity and an independent company limited by guarantee. The charity was established in 2004. They operate across the UK from their Bridport office assisted by a team of regionally based staff and a national network of over 500 tax volunteers. Tax Help for Older People is a charity service from Tax Volunteers that provides free, independent and expert advice and help for older people on lower incomes. (£20,000 gross per annum or less.)

##All but the W.I. (where men are specifically excluded most of the time) cater for both sexes, but it is suggested that most of the clubs tend to be female orientated.

(11) Community Response Group First Meeting Agenda for Establishment of Action Plan

Date:

Time:

Location:

1. What is the current situation?

- What is the location of the emergency?
- Is the emergency near to:-
 - A school
 - A vulnerable area
 - A main access route
- What is the nature of the emergency?
- Is there a threat to life?
- Has electricity, water or gas been affected?
- Are there vulnerable people involved?

2. What resources do we need?

- Food
- Off road vehicles
- Water
- Blankets
- Shelter

3. Establish contact with the emergency services

4. How can we support the emergency service?

5. What actions can safely be taken eg redirecting traffic

6. Who will take the lead for the agreed actions?

7. Other issues?

Actions agreed with Emergency Responders in the event of an evacuation.

Action	By whom?
Help police or Local Authority with door knocking	
Tell emergency services who might need extra help to leave their home	
Run a rest centre	

Alternative arrangement for staying in contact if usual communications have been disrupted.

Communication type	Name of contact	Location
Radio	RAYNET	